

Emergency Communications Sales Tax

Providing financial sustainability through 2028 for improvements in emergency communications including regionalization.



Overwhelming voter support

In 2017, 83% of Spokane County voters approved Proposition 1, which continued the already existing 1/10th of 1% of local sales and use tax that keeps Spokane County's emergency communication systems and services functional.

Integration & enhancement

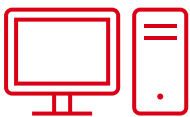
With this funding, Spokane County law and fire agencies are able to maintain the emergency communications system that integrates 911, Police, Fire, EMS staff, and Crime Check, as well as enhance the system's technology and capabilities.

The Emergency Communications Sales Tax funds:



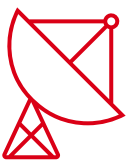
Operations

Keeps current emergency communications systems functioning and reliable. Continues operations for Crime Check, which handled 277,935 calls in 2022. That's an average of 761 calls each day. Crime Check serves as an additional way to reach public safety 24/7 and provides an overflow system for 911 during high-need situations.



Maintenance

Computer Aided Dispatch (CAD) computer system for Police, Sheriff and Fire/EMS agencies which shortens dispatch times and provides first responders with detailed information before they arrive on the scene, as well as nearly 5,000 radios and 23 radio sites that keep emergency agencies connected.



Improvements

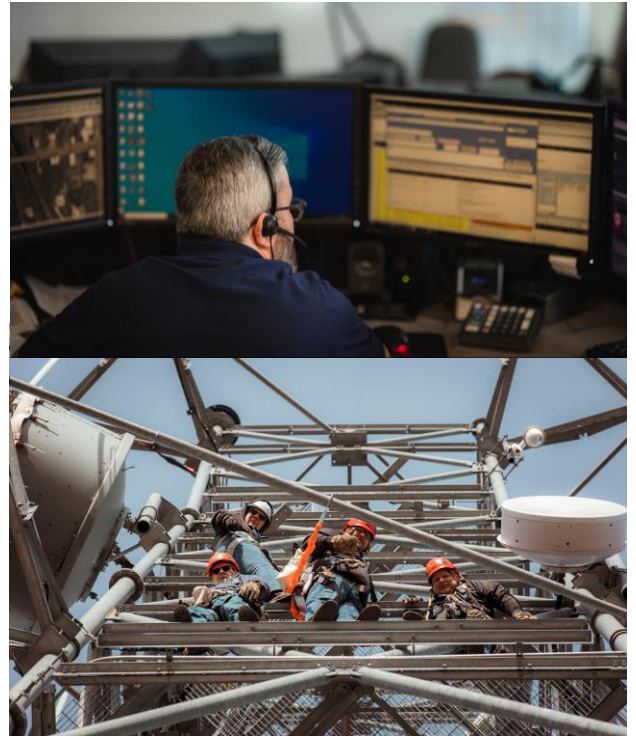
Priorities established include Implemented an updated ALERT Spokane, our region's citizen emergency notification system. Integrates computer aided dispatch (CAD) for Police, Sheriff, Fire and EMS. Expands the County's radio channel capacity to accommodate high-use times such as extreme weather or regional emergencies. Enhances a modernized 911 system, including the future capability to send photos or video to accompany an emergency call. Replaces emergency communication equipment that has reached the end of its useful life. Upgrades computer software for our integrated Police, Sheriff and Fire/EMS radio communication system.

Funding the future of integrated emergency communications

In 2019, as a direct result of countywide leadership decisions, **Spokane Regional Emergency Communications (SREC)** was formed. SREC now maintains and updates our reliable emergency communication system on behalf of our partner agencies as part of an integration of services. When people call for assistance, this system seamlessly collects imperative information, sends help and coordinates first responder resources to ensure residents get the emergency services they need.

With this funding, Spokane County now has:

- Integrated Police/Sheriff, Fire and EMS radio communication systems (SREC managed and maintained)
- Crime Check reporting system where reports are taken by SREC Report Technicians or made directly online by citizens and sent to law enforcement agencies for follow up
- Established ALERT Spokane, our region's citizen emergency's notification system managed by Spokane Department of Emergency Management
- Radio towers and structures to expand coverage and bandwidth for communications (SREC managed and maintained)



How is Emergency Communications funded?

911 Excise Tax

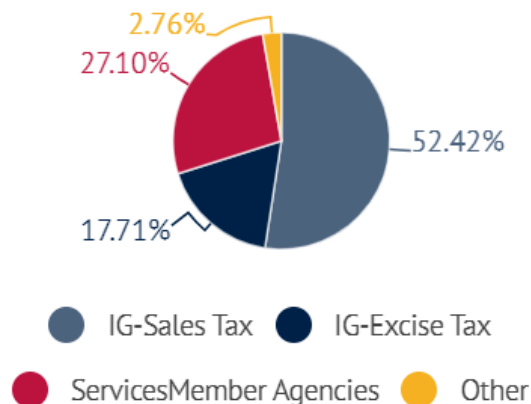
Residents of Spokane County pay 95 cents per month on their cell phone, landline, or pre-paid mobile phone bill to fund emergency communications. This intergovernmental revenue pays for both present and future 911 phone system enhancements and maintenance, as well as staffing to manage initial emergency communications (answering an emergency call to determine location).

1/10th of 1% Sales and Use Tax

Spokane County is allocated 1/10th of 1% of local sales tax to fund the County's Public Safety Communication System, which includes Crime Check. For every ten-dollar retail purchase, Spokane County receives one cent in sales tax. An average Spokane County household contributes about \$1/month.

Member Agency Fees

Additionally, user fees from SRECs member agencies fund staffing and other support services.



SREC's 2024 revenue percentages as of 11/12/23.